


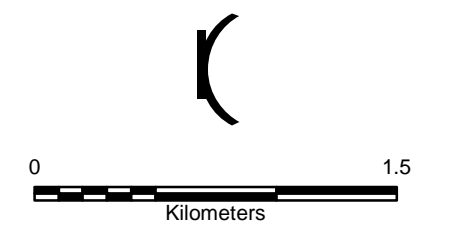
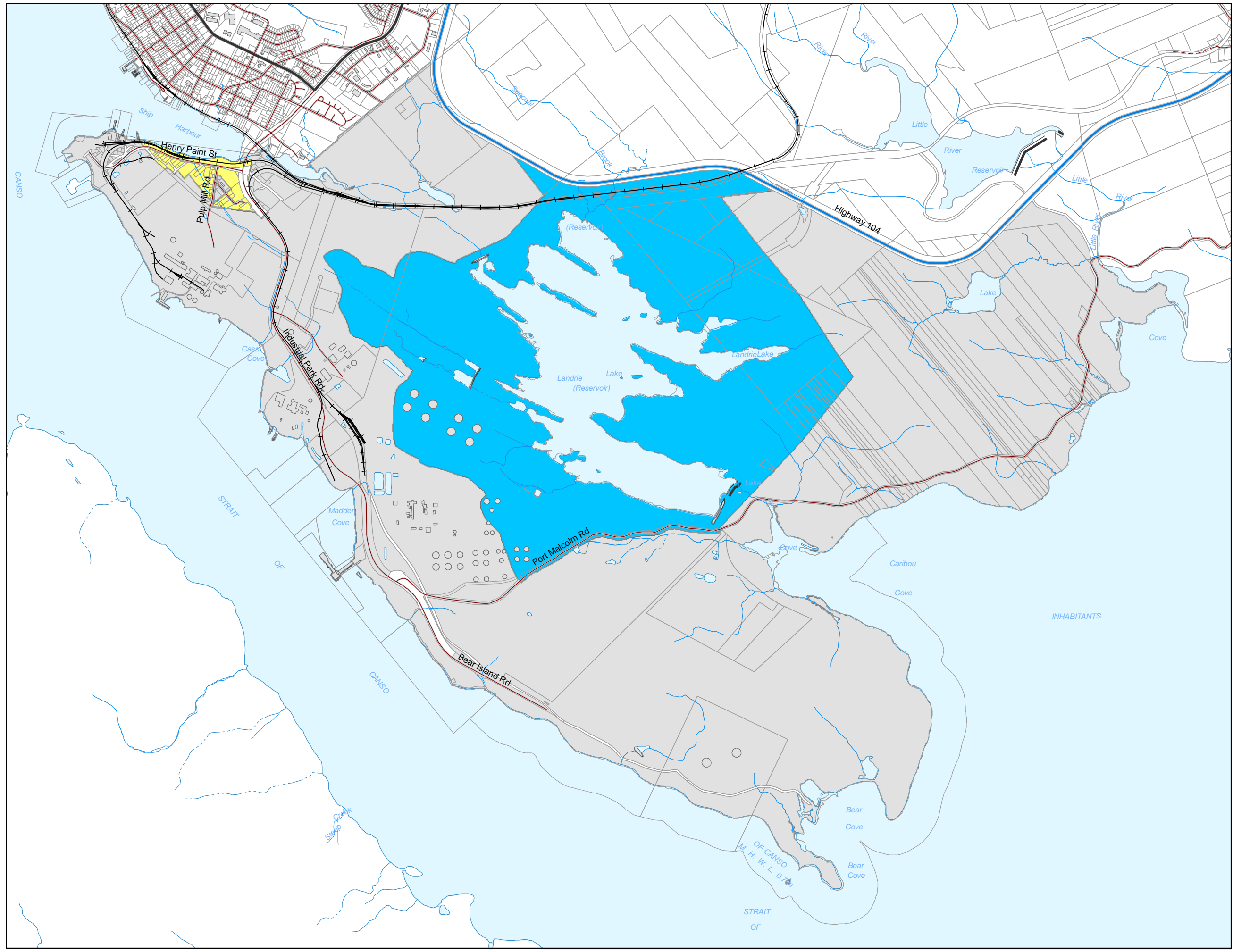


Generalized Future Land Use

WEST RICHMOND PLAN AREA

Designation

-  Industrial
-  Landrie Lake Watershed
-  Residential



This map is a graphical representation of property boundaries which approximate the size, configuration and location of properties. This map is not a land survey and is not intended to be used for legal descriptions. THIS IS NOT AN OFFICIAL RECORD.

