
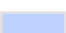
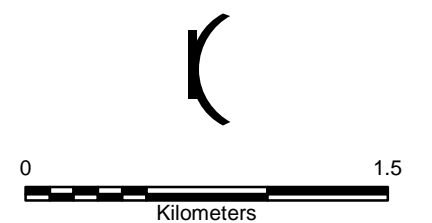
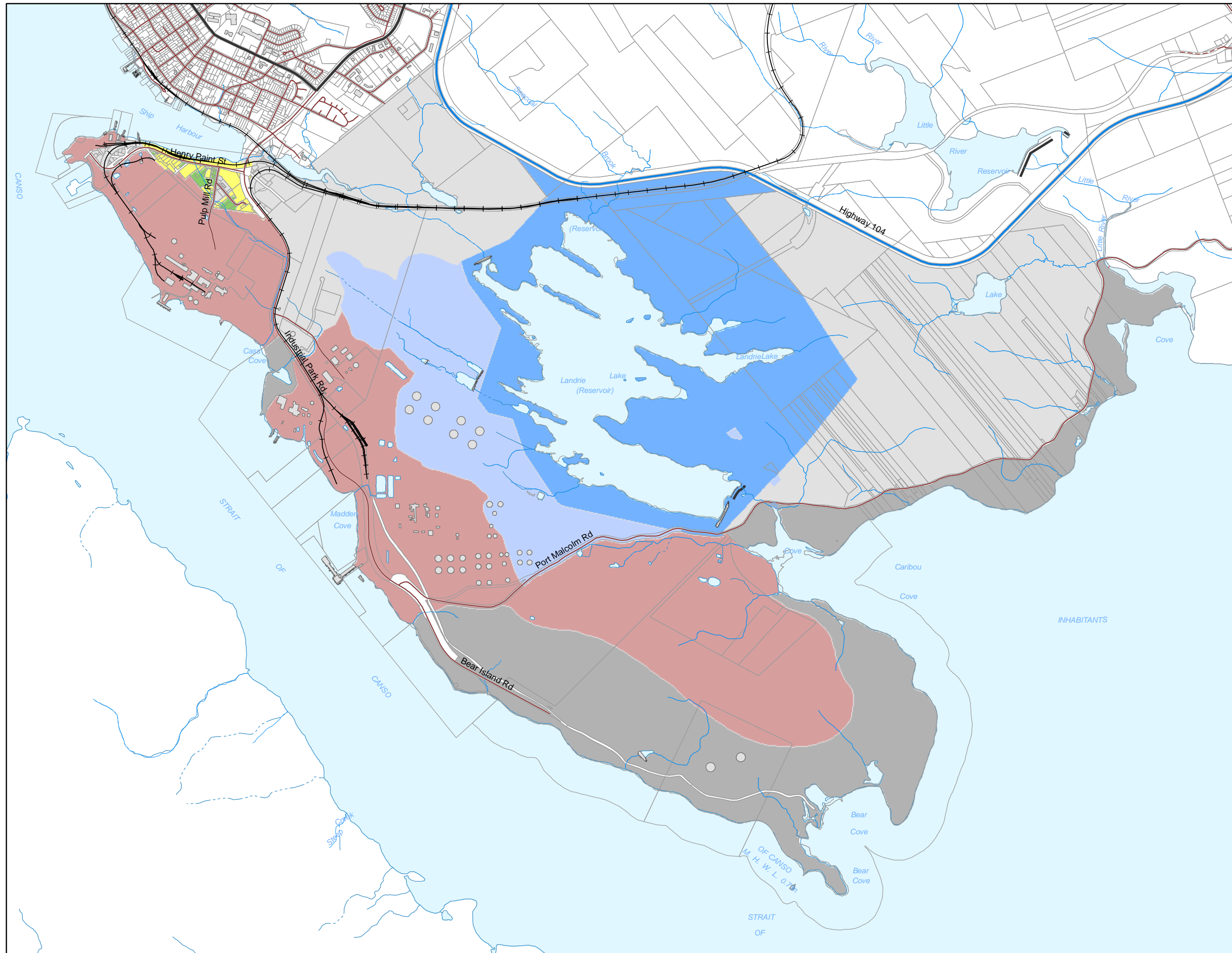


Zoning Map

WEST RICHMOND PLAN AREA

-  I-1 Light Industrial
-  I-2 Port Industrial
-  I-3 Heavy Industrial
-  OS Open Space
-  R-1 Residential
-  W-1 Watershed Protection
-  W-2 Watershed Protection Periphery



This map is a graphical representation of property boundaries which approximate the size, configuration and location of properties. This map is not a land survey and is not intended to be used for legal descriptions. THIS IS NOT AN OFFICIAL RECORD.

